



## Tierney Lane, Hammersmith, W6

**£1,550,000**

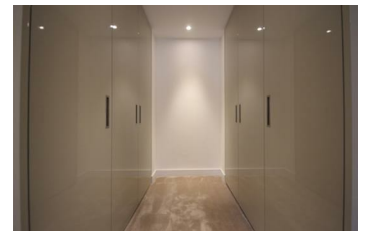
A stylish luxurious two bedroom flat situated within this beautiful riverside development in Hammersmith.

The property comprises spacious reception room with a private balcony, a stylish island open plan kitchen with wine/champagne cooler, two large double bedrooms with built in wardrobes and two luxury bathrooms.

The property further benefits from 24-hour concierge, residents' gym, swimming pool, golf simulator, wine cellar, snooker table, cinema room and spa.

The development is ideally located within walking distance to Hammersmith underground station, which is serviced by the Circle, District, Piccadilly and Hammersmith & City lines.

- Luxurious and stylish riverside development
- Two large double bedrooms
- Ample storage space
- Close to Hammersmith station
- Bright and spacious living room
- Two luxury bathrooms
- 24 hour concierge
- Open plan kitchen with integrated appliances
- Private balcony
- Residential gym & swimming pool



Energy Efficiency Rating		Environmental Impact (CO <sub>2</sub> ) Rating	
Current	Target	Current	Target
<p>Best energy efficient: lower heating costs</p> <p>Not energy efficient: higher heating costs</p>		<p>Best environmental: lower CO<sub>2</sub> emissions</p> <p>Not environmentally friendly: higher CO<sub>2</sub> emissions</p>	
England & Wales	2008/1/EC	England & Wales	2008/1/EC